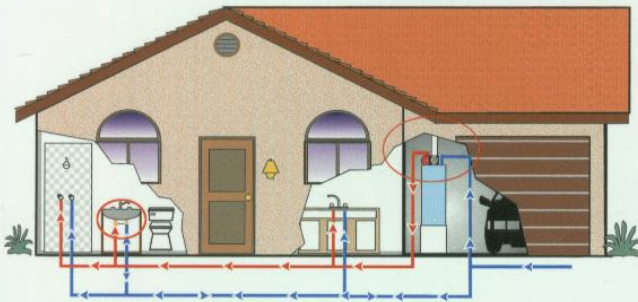


INSTANT HOT WATER!

- > No Return Line Required
- > Easy Installation
- > True Retrofit Design

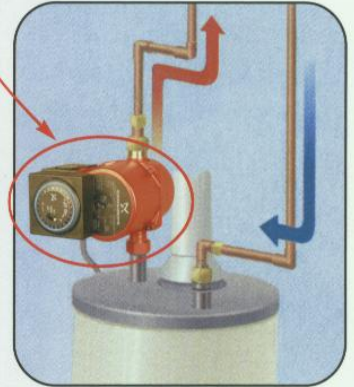


The Grundfos Comfort System does not require an additional 'return line'.

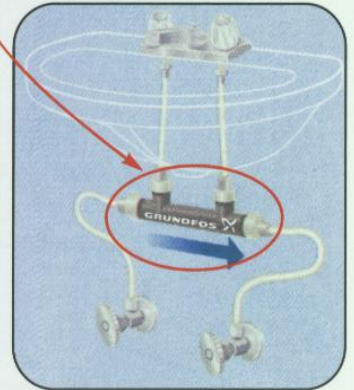
The Comfort System uses a patented Comfort Valve and pump to provide instant availability of hot water at the point of use.

The Comfort Valve is installed at the furthest fixture from the Hot Water Tank. With a built in timer the pump allows hot water to circulate along the loop through the Valve using the cold water side as a return line. As the temperature rises to 100° the valve closes directing hot water to the tap, resulting in a constant availability of hot water.

Comfort Pump installed at the hot water tank



Patented Comfort Valve installed at the furthest fixture from the hot water tank



GRUNDFOS Comfort Series Instant Hot Water System

The Comfort System saves up to 16,000 gallons of water per year, per household (based on average modern household usage) and uses less energy than a 25-watt light bulb.